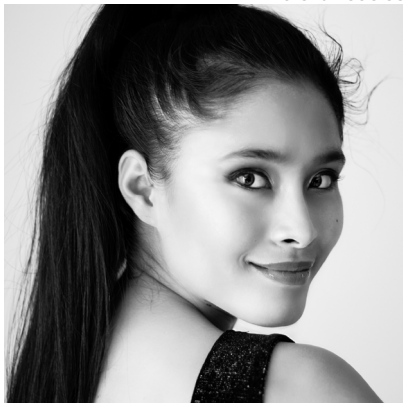




www.nedelec.archi



Florent Nedelec

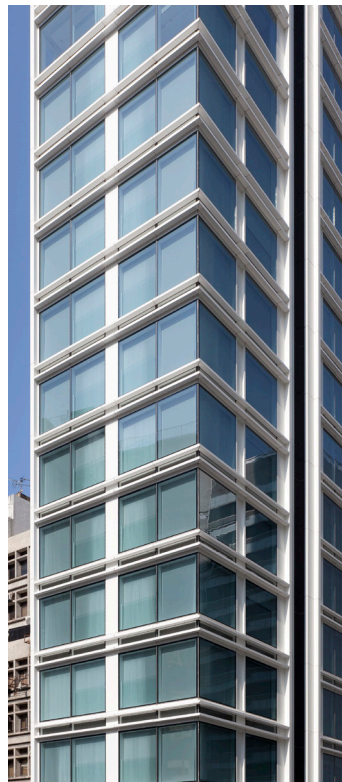
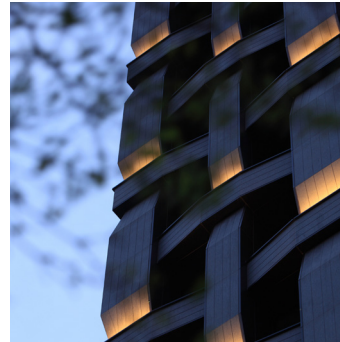


Wanalee Nedelec

NEDELEC Architecture
112 Moo 4 Pa Klok
Thalang, Phuket 83110
Tel: +66 9 5038 8500

www.nedelec.archi

info@nedelec.archi



Overview

NEDELEC Architecture is a recognized Architectural Studio founded by French Architect Florent Nedelec, a Graduate from the Georgia Institute of Technology in the USA and the College of Architecture of Paris, France in 2000. Mr. Nedelec gained his experience working with two Pritzker Prize winners, Atelier Jean Nouvel in Paris and I.M Pei & Partners in New York before joining Frank Williams & Partners as a Principal of the Company in 2005. Mr. Nedelec established his own practice, NEDELEC Architecture in New York in 2007. The Studio later moved to Asia to focus on projects in Hong Kong, Thailand and Taiwan.

Architecture

We specialize in creating powerful and pragmatic solutions to complex and challenging architectural projects. We strive to create intelligent, high-performance, forward-looking designs that exhibit timeless and enduring qualities. We have extensive experience in hospitality, residential, office and mixed-use designs. One of our recent projects was selected by wallpaper* Magazine in their Best Business Hotel 2012 winner list. Another one, Yong He Yuan was a finalist for the Best Residential Project of 2015 by Architizer, New York.

Interior

We embrace a modern sense of space, designing flexible, adaptable interiors that maximize the amount of natural light and connect the inside to the outside. We design interiors that are practical and comfortable and open the views to the outside landscape. We select sustainable materials that respect resources and create healthy forward-thinking interiors.

Sustainable

Our designs are implicitly sustainable in their capacity to endure time. We envision them to be timeless. We use a maximum of material that can be easily recycled and we design buildings that can be easily reused. We are devoted to incorporate the latest methods and technologies to maximize occupant comfort and lower energy consumption. We implement these concepts through advanced building management system, climatically responsive layouts and waste reduction principles. We strive to design sustainable building that incorporates natural systems for day lighting and ventilation, provide a superior environment for the occupants and contribute positively to their surroundings.

www.nedelec.archi

info@nedelec.archi

NEDELEC
Architecture

Yong He Yuan Taipei, Taiwan

The Yong He Yuan residential complex is composed of two buildings, one of 27 floors and one of 17 floors. The buildings have a unique design that incorporates a woven pattern throughout their facades.

Project description

Programm Luxury Residential Complex
Location Taipei, Taiwan
Units 152 apartments
Area 27,000 m²
Status Completed in 2014

Award

ARCHITIZER A+ Finalist 2015



Client

Dahin development

Architectural Design

NEDELEC Architecture

Authorized Person

Lee Chao-Chia Architect Association

Interior Design

Faye Lin

Lighting Design

Originator lighting design



www.nedelec.archi

info@nedelec.archi

NEDELEC
Architecture

Yong He Yuan

Taipei, Taiwan

The Yong He Yuan residential complex is composed of two buildings, one of 27 floors and one of 17 floors. The buildings have a unique design that incorporates a woven pattern throughout their facades.

Project description

Programm Luxury Residential Complex
Location Taipei, Taiwan
Units 152 apartments
Area 27,000 m²
Status Completed in 2014

Award

ARCHITIZER A+ Finalist 2015



Client

Dahin development

Architectural Design

NEDELEC Architecture

Authorized Person

Lee Chao-Chia Architect Association

Interior Design

Faye Lin

Lighting Design

Originator lighting design



www.nedelec.archi

info@nedelec.archi

NEDELEC
Architecture

The Jervois Hong Kong

The Jervois is a luxury boutique hotel that combines a total of 49 suites. All suites are accessible via private lift lobbies and features floor to ceiling windows that offers breathtaking views of Hong Kong. The top five floors are full floor suites with 360 degrees views of Victoria Harbor, Hong Kong Central and the Victoria Peak.

Project description

Programm	Luxury Boutique hotel
Location	89 Jervois Street, Hong Kong
Height	35 floors, 118m
Units	49 suites
Area	4,300 m ²
Status	Completed in 2012

Award

Best Business Hotels 2012

Client

National Properties

Architectural Design

NEDELEC Architecture

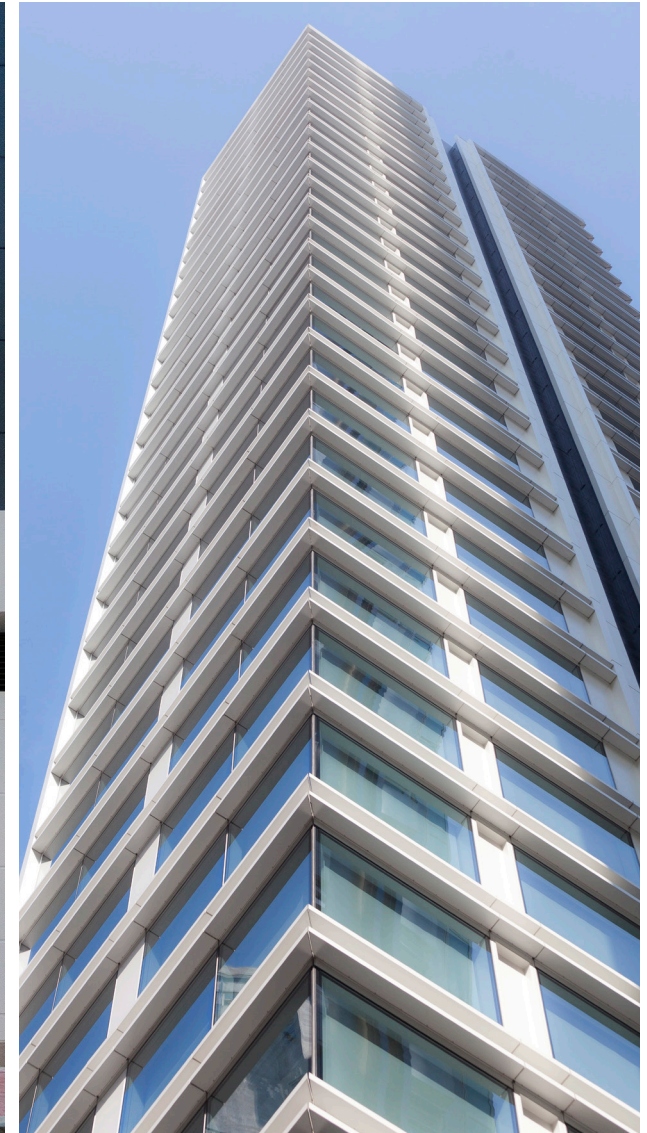
Authorized Person

MLA

Interior Design

Christian Liaigre

© NEDELEC



www.nedelec.archi

info@nedelec.archi

NEDELEC
Architecture

The Jervois Hong Kong

The Jervois is a luxury boutique hotel that combines a total of 49 suites. All suites are accessible via private lift lobbies and features floor to ceiling windows that offers breathtaking views of Hong Kong. The top five floors are full floor suites with 360 degrees views of Victoria Harbor, Hong Kong Central and the Victoria Peak.

Project description

Programm Luxury Boutique hotel
Location 89 Jervois Street, Hong Kong
Height 35 floors, 118m
Units 49 suites
Area 4,300 m²
Status Completed in 2012

Award

Best Business Hotels 2012

Client

National Properties

Architectural Design

NEDELEC Architecture

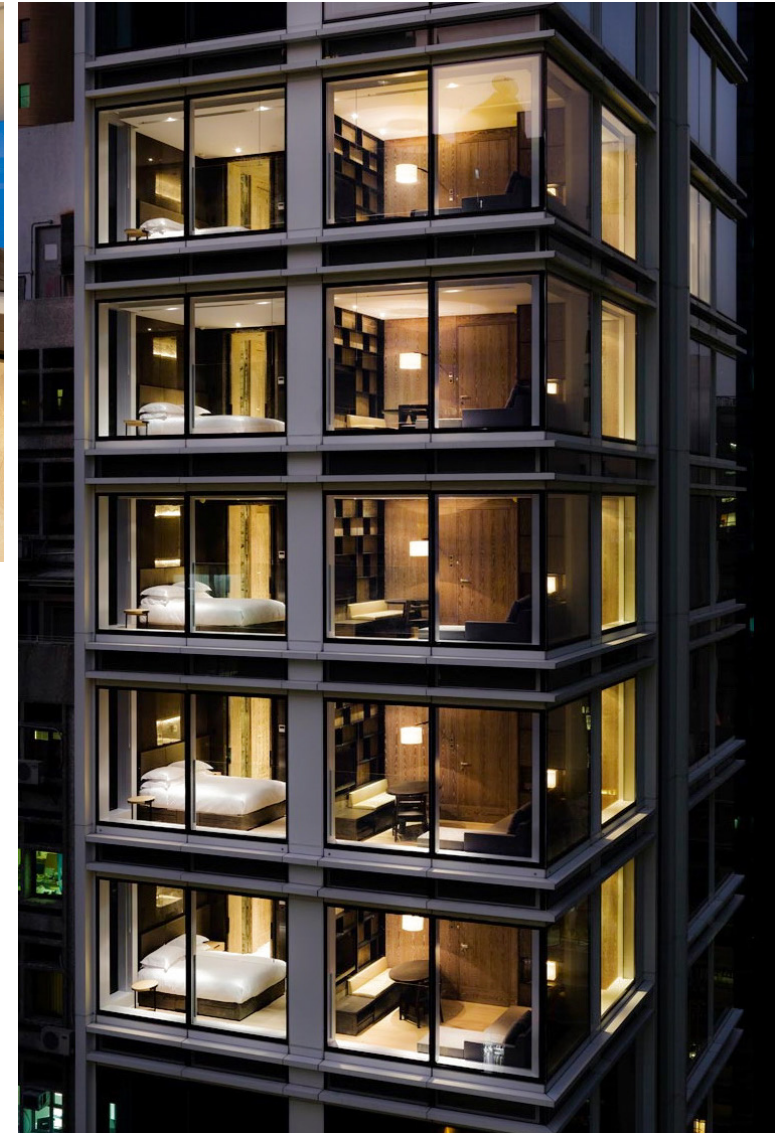
Authorized Person

MLA

Interior Design

Christian Liaigre

© NEDELEC



The Jervois Hong Kong

The Jervois is a luxury boutique hotel that combines a total of 49 suites. All suites are accessible via private lift lobbies and features floor to ceiling windows that offers breathtaking views of Hong Kong. The top five floor are full floor suites with 360 degrees views of Victoria Harbor, Hong Kong Central and the Victoria Peak.

Project description

Programm	Luxury Boutique hotel
Location	89 Jervois Street, Hong Kong
Height	35 floors, 118m
Units	49 suites
Area	4,300 m ²
Status	Completed in 2012

Award

Best Business Hotels 2012

Client

National Properties

Architectural Design

NEDELEC Architecture

Authorized Person

MLA

Interior Design

Christian Liaigre



www.nedelec.archi

info@nedelec.archi

NEDELEC
Architecture

Eigth South Lane Hong Kong

Eigth South Lane is a residential project located in the hip Pok Fu Lam neighborhood of Hong Kong. The project has been designed for "Bohemian Urbanites" that describes people who are trend sensitive and media literate with high aspirations.

Project description

Programm	Luxury Residential Tower
Location	8 South Lane, Hong Kong
Height	25 floors, 85m
Units	95 Apartments
Area	4,820 m ²
Status	Completed in 2016

Client

New World Development

Architectural Design

NEDELEC Architecture

Authorized Person

CKAL

Interior Design

Bar Studio

© NEDELEC



www.nedelec.archi

info@nedelec.archi

NEDELEC
Architecture

Grand Central

Mut Wha Street
Residential Entrances
Hong Kong

Grand Central is a residential project located in Kwun tong, Hong Kong. The Entrance building has been designed with a mixed of limestone and bronze color materials. The Residential lobby stands out in the middle of the composition with a warmer tone to welcome the residents.

Project description

Programm Luxury Residential Entrances
Location Kwun Tong, Hong Kong
Status Completed 2021

Client

Sino Group

Architectural Design

NEDELEC Architecture

Authorized Person

Wong Tung & Partners



www.nedelec.archi

info@nedelec.archi

NEDELEC
Architecture

Grand Central

Hip Wo Street
Residential Entrances
Hong Kong

Grand Central is a residential project located in Kwun tong, Hong Kong. The Entrance building has been designed with a mixed of limestone and bronze color materials. The Residential lobby stands out in the middle of the composition with a warmer tone to welcome the residents.

Project description

Programm Luxury Residential Entrances
Location Kwun Tong, Hong Kong
Status Completed 2021

Client

Sino Group

Architectural Design

NEDELEC Architecture

Authorized Person

Wong Tung & Partners



www.nedelec.archi

info@nedelec.archi

NEDELEC
Architecture

Madison Park Hong Kong

Madison Park is a residential project located in Sham Shui Po, Hong Kong. The geometry of the building has been carefully crafted in two volumes around a plaza.

Project description

Programm	Luxury Residential Tower
Location	Kowloon Road, Hong Kong
Height	25 floors
Units	100 Apartments
Area	4,800 m ²
Status	Under Construction

Client

Sino Group

Architectural Design

NEDELEC Architecture

Authorized Person

Lu Tang Lai Architects Ltd.



Central Residential Tower Hong Kong

This residential project is located in Central, Hong Kong. The podium has been designed with a series of three giant lanterns facing a Garden Plaza with pool.

Project description

Programm	Luxury Residential Tower
Location	Central, Hong Kong
Height	35 floors
Units	175 Apartments
Area	9,400 m ²

Architectural Design

NEDELEC Architecture



Kowloon Residential Tower & Mall

Hong Kong

This 28-storey residential tower is located in Kowloon, Hong Kong. The mall is on two floors. The facades of the podium have been designed warm and rich material such as bronze & limestone. The East facade of the podium has been draped with a series of teak lattice that evokes the shape of draped fabric materials.

Project description

Programm	Luxury Residential Tower & mall
Location	Kowloon, Hong Kong
Height	28 floors
Units	322 Apartments
Area	12,500 m ²

Architectural Design

NEDELEC Architecture



www.nedelec.archi

info@nedelec.archi

NEDELEC
Architecture

Galileo Maritime Academy

Phuket, Thailand

The Galileo Maritime Academy is a two-storey facility with training rooms, offices and dormitories. It's located at Yacht Haven in Phuket. The building has been designed to reduce energy consumption. It is largely cross ventilated and protected from the southward sunlight.

Project description

Programm	Academic facility
Location	Phuket, thailand
Area	1,150 m ²
Status	Completed in 2018

Client

Galileo Maritime Academy

Architect

NEDELEC Architecture



Mission View Villas Phuket, Thailand

The Mission View Villas is a development of 13 luxury Villas in Phuket near the Mission Hill Golf Course. The spaces of the Villas are largely open and flow smoothly from the inside to the outside. They are generously ventilated by large glass sliding doors and well protected from the tropical sun and the monsoon rain.

Project description

Programm	Single Family house
Location	Phuket, thailand
Units	13 Luxury Villas
Area	350-750 m ²
Status	Under Construction

Client

NEDELEC Co., Ltd.

Architect

NEDELEC Architecture

Structural Engineering

DCS Associates



www.nedelec.archi

info@nedelec.archi

NEDELEC
Architecture

Mission View Villas Phuket, Thailand

The Mission View Villas is a development of 13 luxury Villas in Phuket near the Mission Hill Golf Course. The spaces of the Villas are largely open and flow smoothly from the inside to the outside. They are generously ventilated by large glass sliding doors and well protected from the tropical sun and the monsoon rain.

Project description

Programm	Single Family house
Location	Phuket, thailand
Units	13 Luxury Villas
Area	350-750 m ²
Status	Under Construction

Client

NEDELEC Co., Ltd.

Architect

NEDELEC Architecture

Structural Engineering

DCS Associates



www.nedelec.archi

info@nedelec.archi

NEDELEC
Architecture

Mission View Villas Phuket, Thailand

The Mission View Villas is a development of 13 luxury Villas in Phuket near the Mission Hill Golf Course. The spaces of the Villas are largely open and flow smoothly from the inside to the outside. They are generously ventilated by large glass sliding doors and well protected from the tropical sun and the monsoon rain.

Project description

Programm	Single Family house
Location	Phuket, thailand
Units	13 Luxury Villas
Area	350-750 m ²
Status	Under Construction

Client

NEDELEC Co., Ltd.

Architect

NEDELEC Architecture

Structural Engineering

DCS Associates



www.nedelec.archi

info@nedelec.archi

NEDELEC
Architecture

Mission View Villas Phuket, Thailand

The Mission View Villas is a development of 13 luxury Villas in Phuket near the Mission Hill Golf Course. The spaces of the Villas are largely open and flow smoothly from the inside to the outside. They are generously ventilated by large glass sliding doors and well protected from the tropical sun and the monsoon rain.

Project description

Programm	Single Family house
Location	Phuket, thailand
Units	13 Luxury Villas
Area	350-750 m ²
Status	Under Construction

Client

NEDELEC Co., Ltd.

Architect

NEDELEC Architecture

Structural Engineering

DCS Associates





Founder

Florent Nédélec

Florent Nédélec graduated with an Architect DPLG degree from the National College of architecture of Paris La Villette in France and a Master of Architecture from the Georgia Institute of Technology in the USA.

He has won awards for his unique design sensibility and innovative concepts. He is a licensed and Registered Architect in France with the board of Architect in Paris and an accredited LEED Green Associate with the U.S. Green Building Council.

Prior to his practice Florent Nédélec worked for Ateliers Jean Nouvel in Paris and Pei Cobb Freed & Partners Architects LLP in New York on multiple prominent projects in the United States and Europe. He later joined Frank Williams & Partners Architects LLP where he became a Principal of the firm and was in charge of the design and detailing of multiple prominent towers and skyscraper in New York, Moscow, Dubai and Asia.

**Organization Chart of Project Team
for The Southside**

Florent Nédélec, DPLG

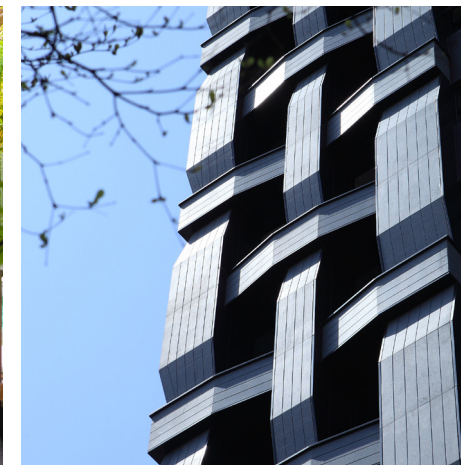
Director, Lead Designer
Registered Architect DPLG, Paris, France
International Associate AIA
LEED Green Associate
M.Arch Georgia Institute of Technology, USA
DPLG, Ecole d'Architecture de Paris la Villette, France

Siriporn Cheungchayan

Director, Senior Designer
Registered Architect Level 2
M.Arch

Wanalee Nédélec

Office Director
MA.

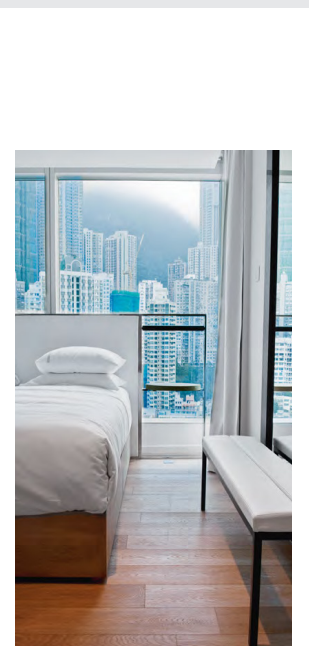


DIX RAISONS D'ALLER À *Hong Kong*

10 RAISONS D'ALLER À HONG KONG

QUINZE ANS APRÈS SA RÉTROCESSION, HONG KONG POURSUIT UNE COURSE EFFRÉNÉE ENTRE LIBÉRALISME OCCIDENTAL ET CULTURE ASIATIQUE. DANS CETTE MOSAÏQUE EST-OUËST, LA VÉGÉTATION LUXURIANTE S'ÉPANOUIT AUX PIEDS DES FORÊTS DE GRATTE-CIEL.

TEXTE *Bérénice Debras* PHOTO *Lola Rebound*



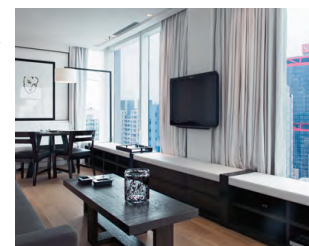
Appartement en ville

10

Dans une élégante tour de 35 étages, dessinée par l'architecte Florent Nédélec, ancien collaborateur d'I. M. Pei, les appartements du Jervois offrent une vision rare de la ville perchée dans les hauteurs. Derrière les façades en verre se déploie le chaos architectural des tours voisines, surnommées Bâtons. Il y a quelque chose d'enivrant et de fascinant à déambuler dans ces espaces suspendus, décorés par le puriste Christian Liaigre. Le visiteur pourra rester quelques nuits ou prolonger son séjour de six mois dans cette résidence hôtelière équipée comme un appartement. Le petit-déjeuner n'étant pas servi, c'est une excellente raison pour suivre les habitudes locales et goûter aux *dim sum* de la rue. |

Hotel apartment — In an elegant 35-floor tower designed by architect Florent Nédélec, who used to work with I.M. Pei, the Jervois boutique hotel apartment offers a rare vision of the city on high, with views of the architectural chaos of the surrounding towers. It's a heady, fascinating experience to walk through these suspended glassed-in spaces, with custom interior and furnishings by purist designer Christian Liaigre. Guests can stay only a few nights or as long as six months. Breakfast isn't served either, but this is an excellent reason to do as the locals do and have some dim sum at one of the street vendors. |

THE JERVOIS 89 Jervois Street, Sheung Wan. Tel. +852 3994 9000. www.thejervois.com



Florent Nédélec | INTERVIEW

INTERVIEW | Florent Nédélec



Yong Ji in Yuan



A quiet presence



Florent Nédélec

In an increasingly international world in which architects can — and do — work across multiple borders, one golden rule still applies everywhere: to toe the line and respect local conditions

TEXT: TERESA CHOW
PHOTOGRAPHY: COURTESY OF FLORENT NÉDELEC ARCHITECTURE

Hong Kong is the home of the skyscraper — latest statistics point to the territory having more buildings above 35m and more skyscrapers above 150m than any other city in the world. And with a population of seven million inhabitants in this high-density special administrative region, every plot is tiny and must dream big.

For New York-based Parisian architect Florent Nédélec, who recently completed The Jervois in Hong Kong, location isn't the primary issue when it comes to designing architecture. Whether he's building in established world-class destinations like New York or Paris, or in any of the other up-and-coming cities, his aim is to achieve sustainability in a modest form.

Instead of designing architecture that aims to astonish the world, then, Nédélec says his works are more about minimalist design with fine details. The Jervois, for example, was completed late last year. A 35-storey boutique hotel, it is erected on a modest 400sq-m plot right on the corner of bustling Jervois Street in Sheung Wan, and exemplifies how crucial it is to build according to scale. "The challenge here was, of course, not to be built out of scale. Sheung Wan as a whole is a very small site," says the architect. "Before I came to Hong Kong, I'd never worked in such small site ever."

Creating a bulky structure, therefore, was totally out of the question; the plot clearly called for a light form. It was also the vibrancy of the area that immediately captured Nédélec's imagination. "Sheung Wan is a dynamic place full of life. Being close to Central and SoHo have benefited it in different ways," he says.

As there was already so much happening along Jervois Street, Nédélec needed to take the circulation of pedestrian flow into consideration. There are two intersection points on the same street, one at Cleverly Street and the other at Jervois Street, with a little park on the side. "It was so important to ensure articulation along the path," says Nédélec. "This is not just about pedestrian flow, but also building a link for connection."

Thus, the design incorporates a series of white horizontal and vertical lines that tie together the geometry of the building and articulate the façades on Jervois and Cleverly streets into a succession of architectural glazed prisms. Another feature of Sheung Wan that influenced Nédélec's vision is the Modernist

architecture from the 1950s and '60s. "When you take off all the signage and air-conditioning units covering these buildings, they are quite beautiful — strict and geometrical," he notes. "I was trying to capture this at The Jervois, too."

In order to create a more open perception for the building, Nédélec chose a glass façade to extend the view from inside-out, while employing expansive corner windows brings in the light. "As you walk through the rooms at The Jervois, you feel as if you are walking through the city," he says. Interior design was handled by Christian Liaigre, and reflects a neutral, up-market aesthetic that sits well with the overall architecture.

Having worked with renowned architects such as Jean Nouvel and IM Pei has equipped Nédélec with a wealth of experience in manifesting various types of building typologies. His presence in Hong Kong has begun with office building and hospitality types, and his footprint has since spread to other parts of Asia with a residential tower in Taiwan to be completed by next year.

The Yong He Yuan Residences, located in Taipei, incorporate a woven pattern throughout the façades of the towers, made of a series of light striped grey granites and dark aluminum panels. The façades feature large square windows in between the interlaced horizontal and vertical elements of the pattern, and are generously recessed to provide additional shading and protection from the sun.

"When designing a building, it is dangerous to be too trendy or edgy," Nédélec says. "When we build, it is more important that the building can stand the test of time, because you don't want to see your design last for just five or 10 years."



PERSPECTIVE

June 2012



focus
市場焦點

Building Futures

為未來而建的理想

Florent Nédélec puts a sustainable stamp on Hong Kong hospitality

堅守可持續發展理念的建築師 – Florent Nédélec

| Text: Elizabeth Kerr | Photo: Florent Nédélec Architecture

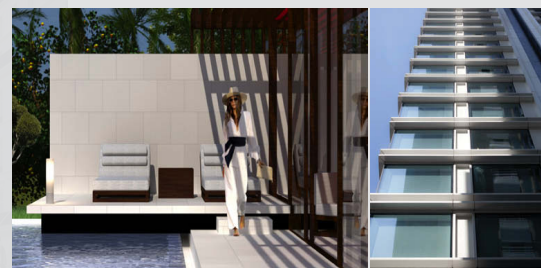


Modern architecture has reached a point where nothing is beyond realisation. The oddest curves, the sharpest edges and the most extreme degrees can be taken from drafting paper to physical building these days. And woven glass. Architect Florent Nédélec is fond of woven glass.

Raised in France, educated in the United States and now based in Hong Kong Nédélec is the kind of identity-based architect that seems to be in such high demand now. No developer – be it commercial or residential – wants their building to be the non-descript block that no one pays attention to. Nédélec's approach leans to simple, but sophisticated, design that fits into its environment but also stands out for having a personality. "In Hong Kong, everything is so dense that the only way to be creative is to work on the façade," he notes. A look at any of Nédélec's work supports that ideal.

After working with Ateliers Jean Nouvel in Paris (Mercer Residences, Manhattan, Barcelona's Torre Agbar), Pei Cobb Freed & Partners (formerly known as IM Pei & Partners) and Frank Williams & Partners (50 Connaught Road, Hong Kong, Dubai's Burj Residences) where he was a principal, he founded Florent Nédélec Architecture, and has been jetting around the globe ever since. One of the reasons for setting up shop here is a familiar one: work initially brought him to town. "I had a client in New York who was doing some boutique hotels and we started

to talk about doing one [in Hong Kong] and I got hired to do four," he recalls. In addition to offices and some residential projects, Nédélec is just completed The Jervois and a Hainan resort, and is finishing up work on the new Whitfield serviced apartment and hotel in North Point (opening this spring), Yong Ye Huan residences in Taipei (currently under construction) and The Queen's in Central, scheduled for completion in 2014. "I like to work on hospitality projects. I find that more interesting. When you do a hotel it has to be 'magical' but you also need to feel at home."



現代建築的技術已達至一個沒有什麼是不可能實現的地步，不規則的曲線、銳利的邊緣以至最極端程度 – 從起草文件至物理建設等。以及建築師Florent Nédélec最偏愛的機械玻璃。Nédélec在法國長大並在美國接受教育，現在則定居於香港，而他正是市場中需求極大的那類「具有個性及地位」的建築師，不論是住宅或商業地產發展商均希望她們擁有令全城嘩然的偉大設計。Nédélec的做法傾向於簡單但精密，以及具有個性但與環境配合的設計。他說：「香港的樓宇是如此的密集，要創新的唯一途徑便是在外牆上發揮創意。」觀乎Nédélec的設計項目足以證明他的理想。

在巴黎Ateliers Jean Nouvel (曾負責項目：Mercer Residences、曼哈頓、巴塞羅那Torre Agbar)，Pei Cobb Freed & Partners (原名IM Pei & Partners) 及Frank Williams & Partners (曾負責項目：香港干諾道50號、迪拜Burj Residences) 工作後，他創辦了Florent Nédélec Architecture並迅速享譽全球。在這裡開設自家建築師樓的原因之一，是由於他曾在香港工作的日子。他回憶說：「曾有一名紐約精品酒店的客戶，聘請我做來港為她負責四間酒店項目。」除了辦公室及住宅項目之外，Nédélec剛剛完成了The Jervois、海南度假村、Whitfield服務式住宅及位於北角的酒店項目（剛於今年春天開

SQUAREFOOT HK

April 2012





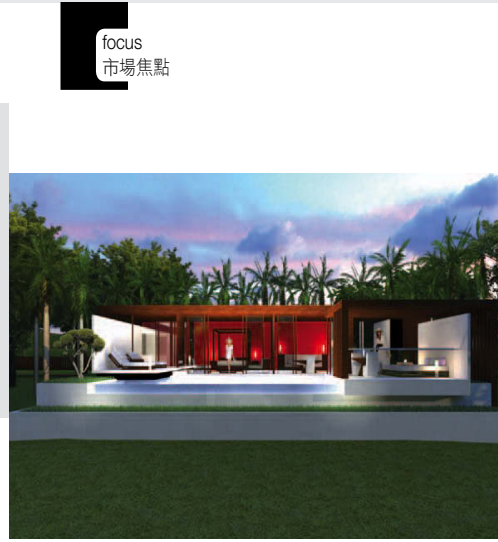
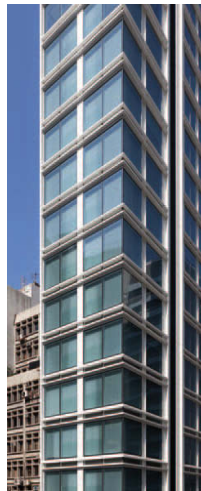
focus
市場焦點

Working in Hong Kong has its own set of standards and practices that can sometimes be frustrating, and sometimes be an exciting challenge. "Well in every country you have to maximise your square footage. It's a rule you find everywhere," he begins with a laugh. And he'll admit that the idea of preservation and sustainability — oddly symbiotic concepts — is still in its infancy in Asia. "Government and developers are starting to look at history and respect for space, and they're starting to realise it's worth keeping. Look at 1881 and the Hollywood Road Police Station," he points out, adding, "The first rule of sustainability in architecture is to make the building last."

Breaking the cycle of demolition and construction that defines development in Asia is the first step in truly sustainable construction according to Nédélec. "From a carbon footprint point of view building every 20 years is bad. You can put all the solar cells and wind turbines on top of a building you like. It's cosmetic. The first step to sustainability is to have them last." Nédélec's structures are not trendy; they're not designed to get boring in five years and get torn down. And for Nédélec, any move toward sustainability is a good move, be it passive (Nédélec is a huge

幕), 正在建設中的項目工程則包括了台北的住宅項目 - Yong Ye Huan 及於2014年竣工的中環The Queen's。他說:「我很喜歡從事酒店業的項目,它令我感覺很有趣。建設酒店項目必需要有很神奇的做法,但您還需要營造出賓至如歸的感覺與氛圍。」

在香港工作有其一套的標準和規例,儘管有時令人感到沮喪,但有些時候卻是一項令人興奮的挑戰。Nédélec笑說:「在每一個國家,您都必須盡量提高面積至最大的限度,這是她們的規則。」他承認保育及可持續發展的理念在亞洲區仍處於起步階段。「政府及發展商開始注重和尊重歷史與空間,並開始意識到它們是值得保留的,看看尖沙咀的1881及荷李活道警署便是其中的例子。而可持續性建築的首要規則便是讓建築持久不倒。」根據Nédélec稱,打破邊拆和建設的循環,代表亞洲的建築業開始邁入真正的可持續發展建設的第一步。「從碳排放量的角度來說,建築物於每20年便會出現很多問題。您可以把太陽能電池和風力渦輪機設於建築物的頂部作裝飾。可持續發展的第一步是讓它們耐用持久。」Nédélec設計的建築結構並不流於時尚,他不會將設計變得容易令人納悶並在五年內被拆除,任



focus
市場焦點

fan of creative insulation) or active buildings — structures that minimise energy waste and ones that create their own energy on site respectively. "Doing the best you can with a passive building ... that's a good way to go."

Ask Nédélec about the bizarre penchant for commercial buildings to be non-intuitive and poorly designed for real use (anyone who's searched for a shopping mall restroom can attest to this) and he can cite a handful of reasons it's so common. Why can't buildings in Hong Kong be smarter? "I understand your point. It has to do with the designer as well as building code. But that kind of thing happens in every profession," he argues. "Look at computers... Some designers are able to do things that are more 'clever.' Look at subway systems. Some are nuts but Hong Kong has

one of the best in the world. It doesn't take more effort to build. It takes more effort to think about." There's no way London ever envisioned having to add so many lines and stations to its Underground. Is Hong Kong benefitting from past architectural "mistakes" in the way it could build an efficiently expandable metro from minute one? "That's how the world works. We build from experience and as we move forward in time we build things that are more sophisticated."

So what would Nédélec like to take a crack at here in Hong Kong? "I'd like to do a villa. Or a resort. Or a villa resort. I've always worked in the city so I'd like to work with nature, to fit in with it," he comments. Then he pauses, considering the likelihood of finding enough space like that in the SAR. "If you find a site, let me know." ①



何趨向可持續發展的舉動都是很好的進度,不管它是被動(Nédélec是創意邊緣的追尋者)或活動建築物,結構必須最大限度地減少能源消耗,或是自身製造能源以供建築使用。

問到Nédélec有關港式商業建築物的不當設計,他回應道:「這是非常普遍的,為什麼香港樓宇的設計不能做得精明一點?我明白這需要設計師與建築標準的配合,但這種事情在任何行業都會出現。看看電腦產品,有些設計師能夠把它設計得更為精明。再看看地鐵系統,香港的港鐵系統是全球最優秀之一的。它並不需要花更多的精力去建立,只是需要花多一點的精力去思考。我們憑藉經驗及時間的歷程,令建築技術進步以及更加精細。」那麼Nédélec希望在香港能有什麼的發揮?「我希望建造一所別墅或是度假屋,更是甚至度假村。我一直都在城市裡工作,所以我希望能參與跟大自然有關的工作。」 ②

info
www.nedelec.com



法國新銳建築師Florent Nédélec 建築新世代的創意主張

我們總是期望台灣的城市樣貌能更美一點，靠合大權究竟還能有什麼樣的詮釋方式？
透過來自紐約的法籍新銳建築師Florent Nédélec，我們看見了東西方交會下的設計思維。

文 | 廖淑蕙 攝影 | Thomas K. 圖片提供 | Florent Nédélec Architecture

1. 設計中的Florent Nédélec Architecture



2. 設計中的Florent Nédélec Architecture
1. 針對台中Taiwan Tower的概念設計。2. 為海南島所設計的度假中心，強調建築與自然的和諧，運用石頭、木頭等材料為主要設計。3. 香港中環的精品酒店The Jervois，35層樓高的設計係以幾何為軸。



3. 香港中環的精品酒店The Jervois

隨著人們動態的生活方式逐漸改變了城市的紋理與樣貌，那麼，對我們而言，一座座看似平板的景觀，是否有更多美的可能，打破以往集合住宅的演繹方式？尤其，住宅與人們的生活息息相關，反映了真實的場景，我們如何透過新世代的設計手法，重新改變城市樣貌？

傳承大師展演當代

來自紐約的法籍新銳建築師建築師Florent Nédélec，畢業於法國建築學院與美國喬治亞理工學院碩士，結合建築與工程的背景，畢業後曾於知名建築事務所Jean Nouvel、貝聿銘與Frank Williams & Partners Architects LLP其下任職，並吸收了這三人不同的操作手法；啟蒙自普立茲克獎得主Jean Nouvel認為必須視光為一種物質的概念；而貝聿銘設計對材質、細節的研究以及紐約曼哈頓地標之父Frank Williams極簡的手法都對Florent帶來了不同的影響。因此，視其作品，總有著清晰明快，卻又展現細緻細節的特色所在。

近年來作品遍及紐約、巴黎、

莫斯科、杜拜和亞洲，Florent Nédélec專精於複雜和富有挑戰性的建築物，並在旅館、住宅、辦公室和住商混合使用的設計上有豐富的經驗。近期也受邀來台操作住宅設計，結合現代主義與東方思維，創造出不同於以往所見的住宅形式。身為一位外籍建築師，他認為台北其實擁有很多好的機會可以發揮與進步，而建築設計就是這種力量的推動力。尤其，談到建築與文化的關係，他認為建築不只是磚與柱，必須結合在地文化、尊重當地環境，讓建築闡述設計與文化之間的關係。因此他在台灣永和的第一個案子雍河院，係為27層的豪華住宅，其使用金屬板與玻璃編織的手法，賦予台灣案子不同以往的立面效果，這樣的靈感來自於東方常見的竹片編織手法，超越建築的結構，外層是利用石材，第二層則是玻璃相互交織成有如編織般的立面，如此一來大樓輕盈與明快的線條，可保有充足的景觀，更減少了能源的使用。除此之外，Florent也在香港設計了眾多精品酒店，在地人稱之為香港，Florent的設計不論是立面材



About Florent Nédélec

畢業於法國巴黎建築學院建築學碩士和美國喬治亞理工學院碩士，為法國註冊建築師（D.P.L.G.），並於紐約成立事務所，先後榮獲在歐洲和美國多項建築獎項。www.fnedelec.com

CHANINTR LIVING Summer 2013

香港 HONG KONG



PHOTOS COURTESY OF THE JERVOIS



The Jervois

In a 'more' city, 'less' is sometimes a welcome treat.

After you have battled the streets, shops and markets of Hong Kong, you don't want to have to do it all over again when you get back to your hotel. Sometimes you just want to get to your room as quickly and simply as possible, running into the fewest number of people and regaining a sense of calm and order.

Located in Shuang Wan, just off Queen's Road, and walking distance to Lan Kwai Fong and Central, The Jervois is a sanctuary of tranquility. Designed by the master of this school of thought, Christian Liaigre, the interiors cool you down the second you enter the one receptionist lobby and walk a few steps to the private

elevators that bring you straight to your door. **Housed in a sleek building designed by another skilled Frenchman, Florent Nedelec,** with just 2 units per floor and no restaurants - it really feels as if it is your private apartment in the city. Each unit has a small kitchen, living, and dining area separate from the bedroom and bathroom. A light oak unites the floors of the two rooms and a grey cerused one graces the shelving that divides the room through a hidden sliding door. White marble is the main feature of the bathroom and lends it a clean and calming feel. With clever storage solutions throughout the room, you never feel cramped or cluttered.

All in all, the genius really comes through in that even though the rooms are not huge, they are light-filled with wrap around floor to ceiling windows, super comfortable and at the same time provide all the needed luxuries. For those who have always dreamed of having a Christian Liaigre designed home, this comes pretty close at a very reasonable price, even by Hong Kong standards.

The Jervois
89 Jervois St.
Shuang Wan, Hong Kong

thejervois.com
+852.3994.9000